

# Lean Execution

## The Workshop

A day and a half immersion into the most powerful process for improving quality, cost, and delivery with a hands-on simulation to illustrate and instill the key concepts.

## Who Should Attend

- Operations Management  
(VPs of Manufacturing, Plant Managers, Business Unit Leaders)
- Operations and Continuous Improvement Staff  
(C.I. Managers, Engineers, Quality Managers, Supply Chain Leaders)

## Key Learning Principles

- Basics of Lean (Stability, J.I.T. concepts, Autonomation)
- How to convert your operation from batch to flow
- 5S principles of workplace organization
- Cascade the “wildly important” goals
- Selection process for Lean projects that support your goals

## Schedule

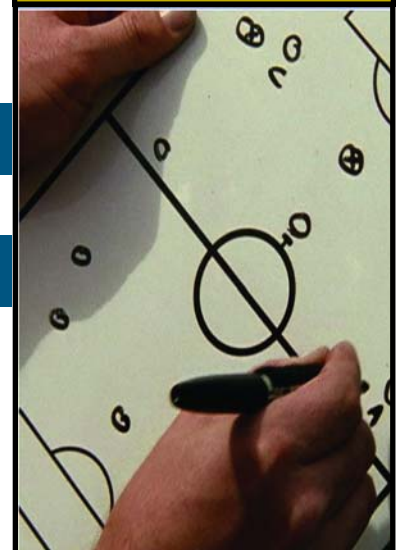
Greensboro, NC

April 15-16, 2010

## Pricing

- Individual: \$395.00
- Lodging and Transportation not included

To achieve goals you have never achieved before, you must do things you've never done before.



# Lean Execution

## Agenda

### Day 1

**Thursday**

**April 15, 2010**

7:45 AM	Continental Breakfast Provided
8:00—8:15 AM	Welcome and Introductions
8:15—12:00 PM	Morning Session: Intro to “Lean Execution”
12:00—12:45 PM	Lunch Provided
12:45—5:00 PM	Afternoon Session: Basics of Lean + Factory Simulation
6:00 PM	Dinner Provided

### Day 2

**Friday**

**April 16, 2010**

7:45 AM	Continental Breakfast Provided
8:00—11:00 AM	Morning Session: Lean Execution Wrap- up
11:00—11:30 AM	Question and Answer Session
11:30—12:00 PM	Closing Comments
12:00 PM	End of Session

**Register**

**Now**

**Online: Workshops Tab at <http://performance.totalinsight.com>**

**Email: Brenda Erich at [berich@totalinsight.com](mailto:berich@totalinsight.com)**

**Reference: Lean Execution Seminar**

**Event  
Location**

Hotel Accommodations: [Doubletree Hotel](#)

Event Location: Greensboro, NC

Lodging: Please make hotel reservations then email Brenda Erich at [berich@totalinsight.com](mailto:berich@totalinsight.com) to receive the special room rate for this event.